



Contact

Address: O.S.B. 24.Cad.No:16 Melikgazi / KAYSERİ  
Phone: +90 (352) 321 38 73 - Fax: +90 352 321 38 73  
E-mail: info@gercekplastik.com



## About Us

*Our Mission*



Our company entered the plastic sector in 1980 and started to manufacture plastic parts of the furnace, stove, mini washing machine and churning machine that was needed by that period. In 1983, it broke new ground by bringing the first Automatic Injection Machine to Kayseri. This first has become the principle of the company and has always led the way for plastic work.

Our company has not yet produced in Turkey in 1995 Mattress Air Capsules of the design registration, however, it has signed a policy based on in-house production. In addition to the Mattress Air Capsules that our company currently produces; exports the wide range of Base, Modular Furniture Plastic Parts, Steel Door Accessories, White Goods and 3D Spacer fabrics to more than 20 countries. Our company still continues to serve the best and highest quality in the plastics industry in Kayseri.

  
**gerçek**  
mattress & base components *Plastik*

**Our Mission - Our Vision**



**A Little Touch Can**  
*Change Everything*

**OUR MISSION**

Is to complete our customers' needs and expectations with our high work ethic, quality and reliable products, trained and experienced employees. With our comfortable, aesthetic and modern products, our goal is to be the best in what we do, by offering trust, aesthetics and comfort to our customers.

**OUR VISION**

To follow the innovations brought by the sector, Our management approach; Honesty and accountability, Responding to customer expectations from all segments, Never compromising on quality during efficient and productive work.

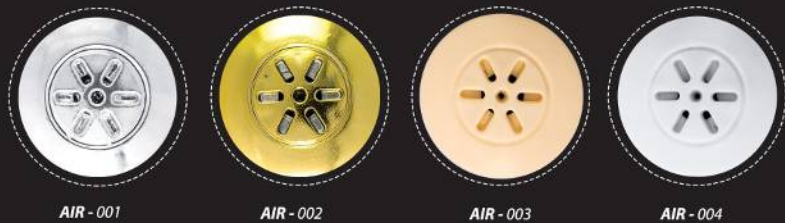
*These small products that provide air flow in your bed help you to sleep comfortably by extending the life of both the decorative and the bed.*

*All of our products are patented.*

  
**gerçek**  
mattress & base components *Plastik*

**A Little Touch Can**  
*Change Everything*

# Beds Air *Systems*



***A Little Touch Can Change Everything...***

*These small products that provide air flow in your bed help you to sleep comfortably by extending the life of both the decorative and the bed.  
All of our products are patented.*



# Extra Air Systems



AIR - 009



AIR - 010



AIR - 011



AIR - 012



AIR - 013



AIR - 014



AIR - 015



AIR - 016



AIR - 017



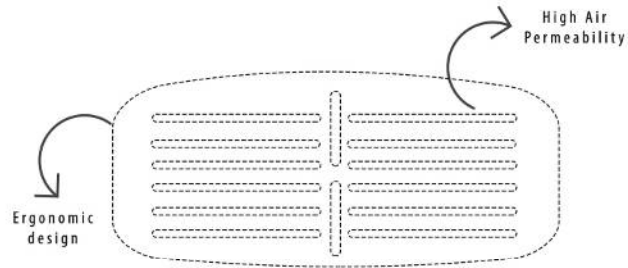
AIR - 018

**A Little Touch Can Change Everything...**

*These small products that provide air flow in your bed help you to sleep comfortably by extending the life of both the decorative and the bed.  
All of our products are patented.*



# Extra Air *Systems*



## *A Little Touch Can Change Everything...*

*These small products that provide air flow in your bed help you to sleep comfortably by extending the life of both the decorative and the bed. All of our products are patented.*



AIR - 019



AIR - 020



AIR - 021



AIR - 022



AIR - 023

# Little Air *Systems*



AIR - 024



AIR - 025



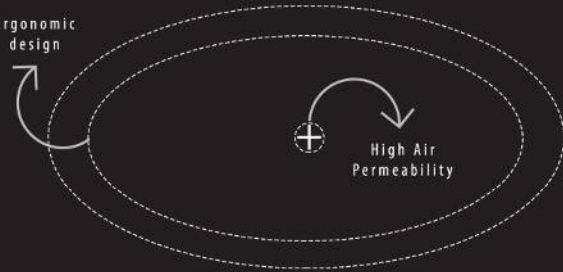
AIR - 026



AIR - 027

# Extra Air *Systems*

Ergonomic  
design



High Air  
Permeability



AIR - 028



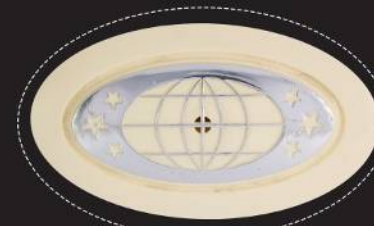
AIR - 029



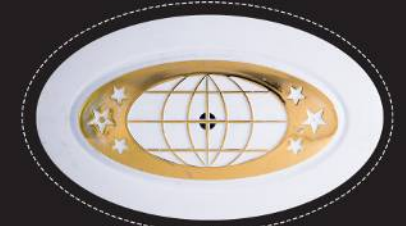
AIR - 030



AIR - 031



AIR - 032



AIR - 033



AIR - 034



AIR - 035



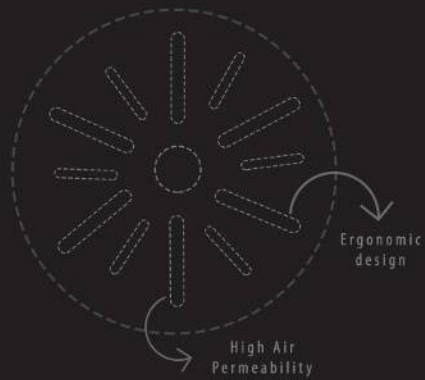
AIR - 036

**A Little Touch Can Change Everything...**

*These small products that provide air flow in your bed help you to sleep comfortably by extending the life of both the decorative and the bed.  
All of our products are patented.*



# Extra Air Systems



AIR - 037



AIR - 038



AIR - 039



AIR - 040



AIR - 041



AIR - 042



AIR - 043



AIR - 044



AIR - 045



AIR - 046



AIR - 047



AIR - 048



AIR - 049



AIR - 050



AIR - 051



AIR - 052

# Extra Air *Systems*



AIR - 053



AIR - 054



AIR - 055



AIR - 056

AIR - 057



AIR - 058



AIR - 059



AIR - 060



AIR - 061



AIR - 062



AIR - 063



AIR - 064



AIR - 065



# Extra Air Systems



AIR - 066



AIR - 067



AIR - 068

**A Little Touch Can Change Everything...**

*These small products that provide air flow in your bed help you to sleep comfortably by extending the life of both the decorative and the bed.  
All of our products are patented.*



AIR - 069



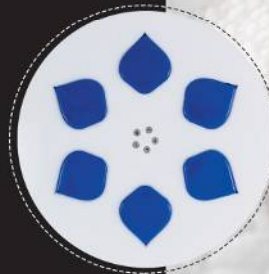
AIR - 070



AIR - 071



AIR - 072



AIR - 073

# Extra Air Systems



AIR - 074



AIR - 075



AIR - 076



AIR - 077



AIR - 078



AIR - 079



AIR - 080

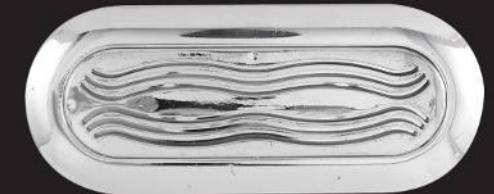


AIR - 081

# Cool Air Systems



AIR - 082



AIR - 083



AIR - 084



AIR - 085

**A Little Touch Can Change Everything...**

*These small products that provide air flow in your bed help you to sleep comfortably by extending the life of both the decorative and the bed.  
All of our products are patented.*

# Drop Label Systems



LBL-003



LBL-004



LBL-005

# Drop Label Systems



LBL-006



LBL-007



LBL-008

Skin Air  
*Systems*



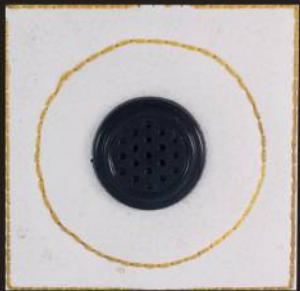
# Extra Air Systems



LHR - 001



LHR - 002



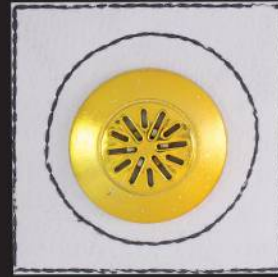
LHR - 003



LHR - 004



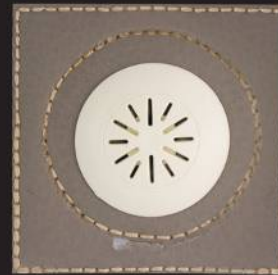
LHR - 005



LHR - 006



LHR - 007



LHR - 008



LHR - 009

# Extra Air Systems



LHR - 010



LHR - 011



LHR - 012



LHR - 013

# Extra Air Systems



AKS - 001



AKS - 002



AKS - 003



AKS - 004



AKS - 005



AKS - 006



AKS - 007

AKS - 008

# Extra Air Systems



AKS - 009



AKS - 010



AKS - 011



AKS - 012



Bed Tag

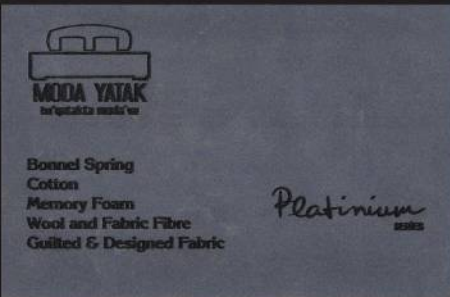
Systems



AKS - 013



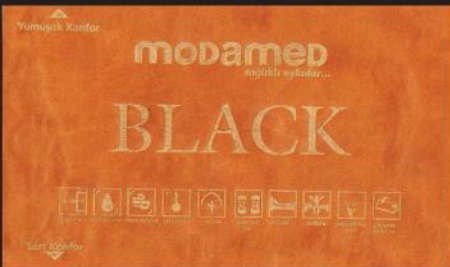
DKM - 001



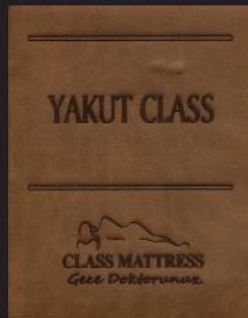
AKS - 014



DKM - 002



AKS - 015



AKS - 016



DKM - 003

Bed Tag

Systems



DKM - 004



DKM - 005



LBL - 001



LBL - 002

# Beds *Systems*



AKS - 017

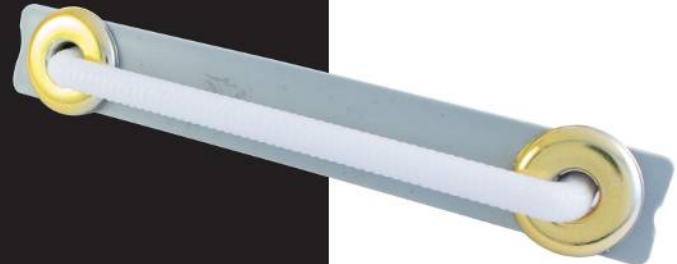
***A Little Touch Can Change Everything...***

*These small products that provide air flow in your bed help you to sleep comfortably by extending the life of both the decorative and the bed.  
All of our products are patented.*

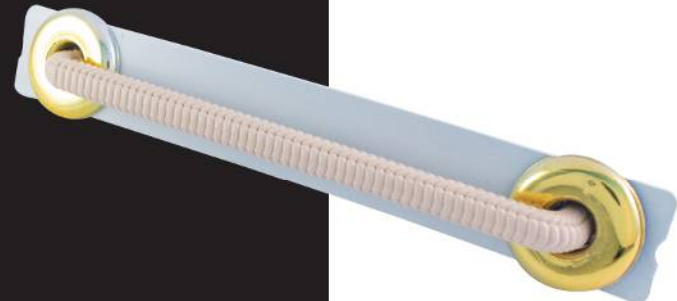
# Beds *Systems*



AKS - 018



AKS - 019



AKS - 020

3D Spacer  
*Systems*



# Beds Spacer Systems



SPC - 001

SPC - 002

SPC - 003

SPC - 004

SPC - 005

***A Little Touch Can Change Everything...***

*These small products that provide air flow in your bed help you to sleep comfortably by extending the life of both the decorative and the bed.  
All of our products are patented.*



SPC - 006

## 3D SPACER



SPC - 007



SPC - 008



SPC - 009



SPC - 010



SPC - 011



SPC - 012



SPC - 013



SPC - 014



SPC - 015



SPC - 016



SPC - 017



SPC - 018



SPC - 019



SPC - 020



SPC - 021

# Beds Spacer Systems



FTL - 001



FTL - 002



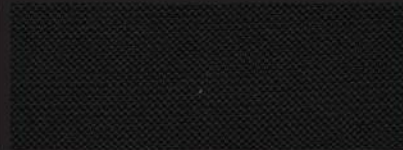
FTL - 003



FTL - 004



FTL - 005



FTL - 006



FTL - 007



FTL - 008



FTL - 009



FTL - 010



FTL - 011



FTL - 012

# Beds Spacer Systems



FTL - 013



FTL - 014



FTL - 015



FTL - 016



FTL - 017



FTL - 018



FTL - 019



FTL - 020



FTL - 021



FTL - 022



FTL - 023



FTL - 024

# Beds Spacer Systems



FTL - 025



FTL - 026



FTL - 027



FTL - 028



FTL - 029



FTL - 030



FTL - 031



FTL - 032



FTL - 033



FTL - 034



FTL - 035



FTL - 036

# Beds Spacer Systems



FTL - 037



FTL - 038



FTL - 039



FTL - 040



FTL - 041



FTL - 042



FTL - 043



FTL - 044



FTL - 045



FTL - 046



FTL - 047



FTL - 048

# Beds Spacer Systems



FTL - 049



FTL - 050



FTL - 051



FTL - 052



FTL - 053



FTL - 054



FTL - 055



FTL - 056



FTL - 057



FTL - 058



FTL - 059



FTL - 060



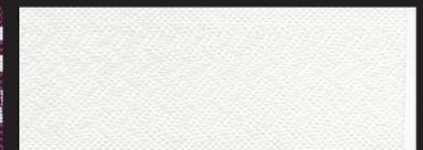
FTL - 061



FTL - 062



FTL - 063



FTL - 064



FTL - 065



FTL - 066



FTL - 067



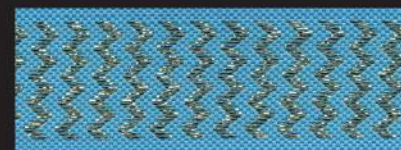
FTL - 068



FTL - 069



FTL - 070



FTL - 071



FTL - 072



FTL - 073



FTL - 074



FTL - 075

Base  
*Systems*





Base  
*Design*



BSE - 001



BSE - 001



BSE - 001



BSE - 001



BSE - 001

*Base* Creative

*Disassembled products providing 70% workmanship advantage.*

*Always original materials. All of our products are patented.*



BSE - 002

BSE - 003



BSE - 004

BSE - 005

# Base Design *Systems*



BSE - 006



BSE - 007



BSE - 008

# Base Design *Systems*



BSE - 009

BSE - 010

**Disassembled products providing 70% workmanship advantage.**

*Always original materials. All of our products are patented.*

# Base *Opening Arm*



BSE - 011

BSE - 014

BSE - 015

# Base *Opening Arm*



BSE - 012

BSE - 013

**Disassembled products providing 70% workmanship advantage.**

*Always original materials. All of our products are patented.*

# Base Design *Systems*



BSE - 018



BSE - 019



BSE - 020

# Base Design *Systems*



BSE - 023



BSE - 024



BSE - 025



BSE - 021



BSE - 022



BSE - 026



BSE - 027

**Disassembled products providing 70% workmanship advantage.**

*Always original materials. All of our products are patented.*



BSE - 028



BSE - 029

# Base Design *Systems*

*Disassembled products providing 70% workmanship advantage.*

*Always original materials. All of our products are patented.*



BSE - 030



BSE - 031



BSE - 032

# Base Design *Systems*



BSE - 033



BSE - 034



BSE - 035



BSE - 036

# Base Design *Systems*



BSE - 037



BSE - 038



BSE - 039



BSE - 040



BSE - 041

# Base Design *Systems*



BSE - 042



BSE - 043



BSE - 044



BSE - 045



BSE - 046

# Base Design *Systems*



BSE - 047

BSE - 048



BSE - 049



BSE - 050



BSE - 051



BSE - 052



BSE - 053



AIR - 054

# Base Design *Systems*



BSE - 055



BSE - 056



BSE - 057



BSE - 058



BSE - 059



BSE - 060



BSE - 061



BSE - 062



BSE - 063

# Base Design *Systems*



BSE - 064



BSE - 065



BSE - 066



BSE - 067



BSE - 068



BSE - 069



BSE - 070

# Base Design *Systems*



BSE - 071



BSE - 072



BSE - 073

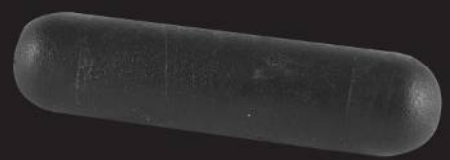


BSE - 074



BSE - 076

BSE - 075



BSE - 077



# Base Design

## Systems



BSE-078



BSE-079



BSE-080



BSE-081



BSE-082



BSE-083



BSE-084

# Base Design

## Systems



BSE-085



BSE-086



BSE-087



BSE-088



BSE-089



BSE-090



BSE-091



BSE-092



BSE-093



BSE-094



BSE-095

# Base Design Systems



MTL - 001

MTL - 002

***Our products are absolutely stainless and harmless to human health.***

*Disassembled products providing 70% workmanship advantage. Always original materials.  
All of our products are patented.*

# Base Design Systems



MTL - 003



MTL - 004



MTL - 005



MTL - 006

**Furniture**  
*Equipment*



# Furniture *Equipamente*



AYK-001

# Furniture *Equipamente*



AYK-008



AYK-002



AYK-003



AYK-004



AYK-009



AYK-010



AYK-011



AYK-005



AYK-006



AYK-007



AYK-012



AYK-013



AYK-014

# Furniture *Equipamente*



AYK-015



AYK-016



AYK-017

# Furniture *Equipamente*



AYK-018



AYK-019



AYK-020



AYK-021



AYK-022



AYK-023

# Furniture *Equipamente*



AYK - 024



AYK - 025

# Furniture *Equipamente*



AYK - 028



AYK - 029



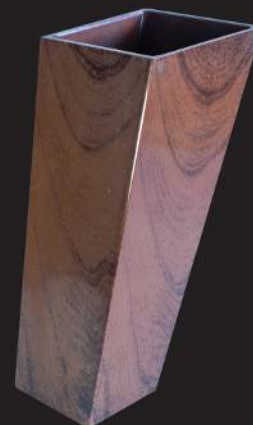
AYK - 030



AYK - 026



AYK - 027



AYK - 031



AYK - 032

# Furniture *Equipamente*



AYK - 033



AYK - 034



AYK - 035



AYK - 036

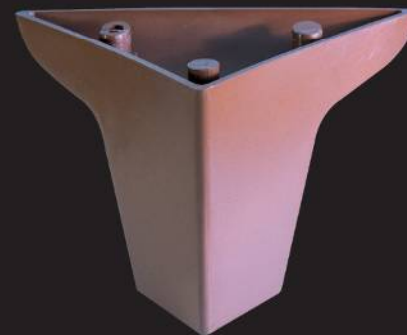


AYK - 037

# Furniture *Equipamente*



AYK - 038



AYK - 039



AYK - 040



AYK - 041



AYK - 042

# Furniture *Equipamente*



AYK - 043



AYK - 044



AYK - 045



AYK - 046

# Furniture *Equipamente*



MTL - 007



AKS - 021



# Door *Equipment*



# Door *Equipamente*

*Your products gain a modern look with our new door accessories.*

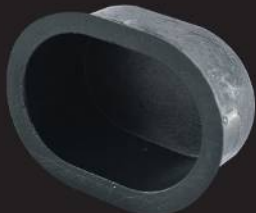
*All of our products are patented.*



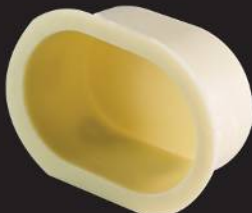
CK-001



CK-002



CK-003



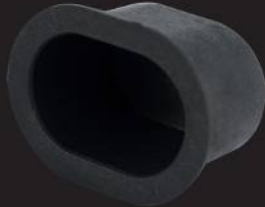
CK-004



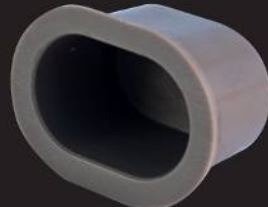
CK-005



CK-006



CK-007



CK-008

# Door *Equipamente*



CK-009



CK-010



CK-011



CK-012

# Door *Equipamente*



CK-013



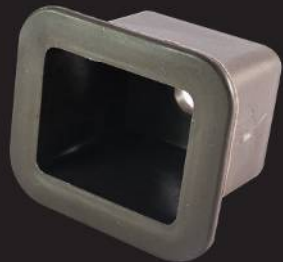
CK-014



CK-015



CK-016



CK-017



CK-018



CK-019



CK-020



CK-021



CK-022

# Door *Equipamente*



CK-023



CK-024



CK-025



CK-026

# Door *Equipamente*



CK-027



CK-028



CK-029



CK-030



CK-031



CK-032

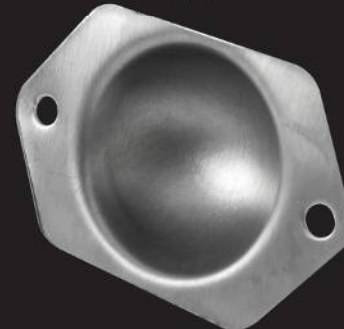


CK-033

# Door *Equipamente*



CK-034



CK-035



CK-036



CK-037



CK-038

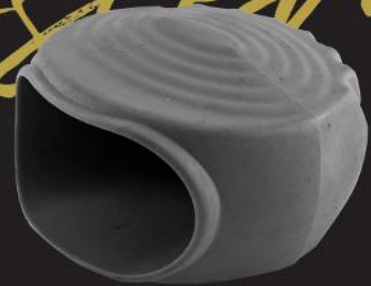


CK-039



CK-040

# Chair Systems



SND - 001



SND - 002



SND - 003

# Chair Systems



SND - 004



AIR - 005



SND - 006



SND - 007



SND - 008